

***Short-Term Outcomes after D2 Gastrectomy with Complete Mesogastric
Excision in Patients with Locally Advanced Gastric Cancer: A Systematic
Review and Meta-Analysis of High-Quality Studies***

SUPPLEMENTARY MATERIALS

Index

1) Search queries	2
2) Funnel plots of subgroup analysis and bubble plots of metaregression	3
3) Risk of bias assessment: traffic light plot	5
4) Secondary endpoints: Funnel plots of publication bias	7

1) Search queries

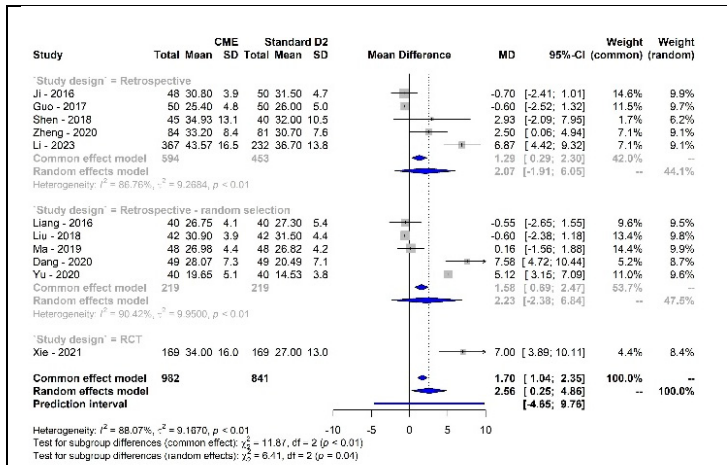
Pubmed and Cochrane Library = 90 results

((gastric cancer) OR (gastric neopl) OR (gastric adenocarcinoma) OR (cancer of the stomach) OR (adenocarcinoma of the stomach) OR (gastric tumor)) AND ((complete mesogastr* excision) OR (mesogastr*) OR (CME) OR (enjoyable space) OR (holy plane))*

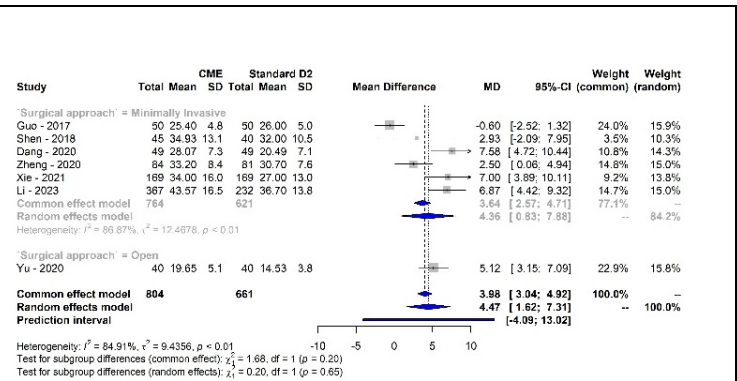
Scopus = 663 results

("gastric cancer" OR "gastric neopl" OR "gastric adenocarcinoma" OR "cancer of the stomach" OR "adenocarcinoma of the stomach" OR "gastric tumor") AND ("complete mesogastr* excision" OR "mesogastr*" OR "CME" OR "enjoyable space" OR "holy plane")*

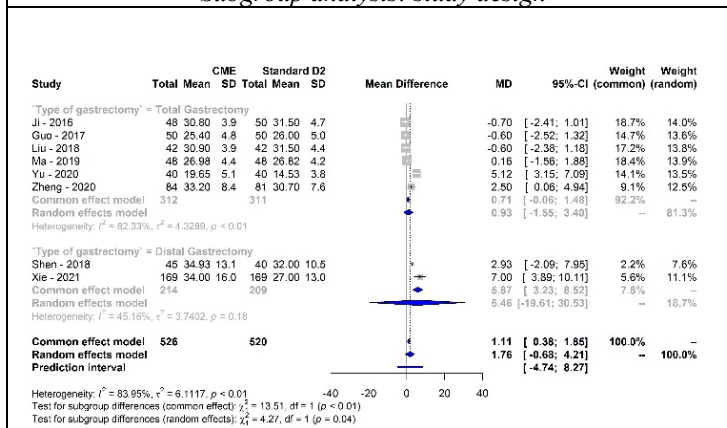
2) Funnel plots of subgroup analysis and bubble plots of metaregression



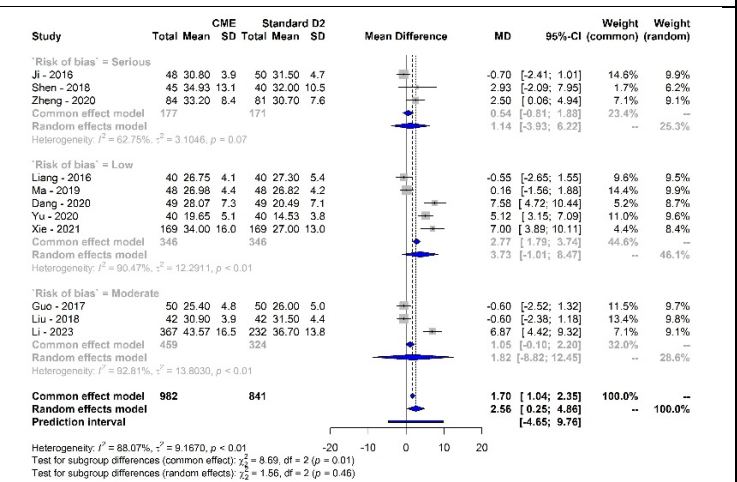
Subgroup analysis: study design



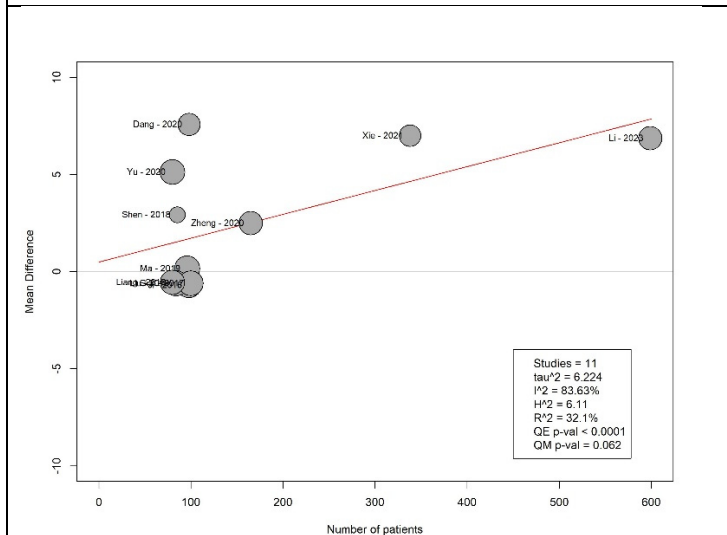
Subgroup analysis: surgical approach



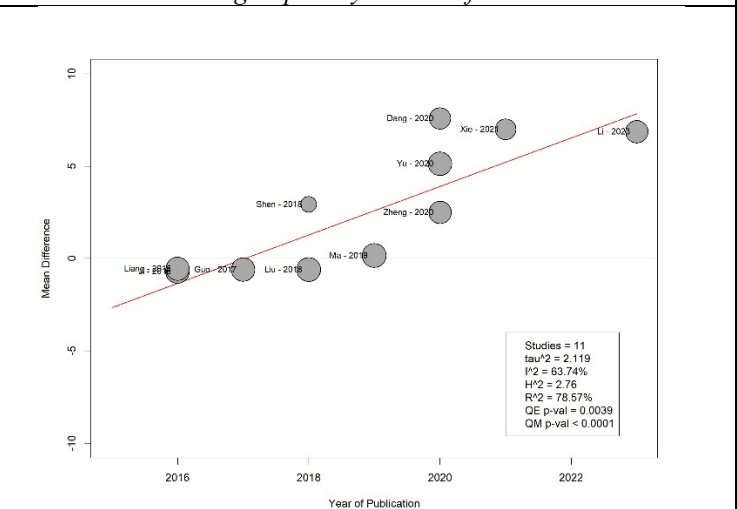
Subgroup analysis: type of gastrectomy



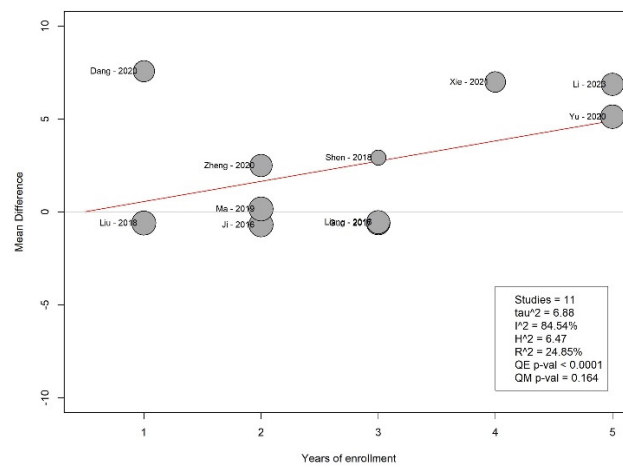
Subgroup analysis: risk of bias



Metaregression analysis: number of patients per study



Metaregression analysis: year of publication













































Metaregression analysis: years of enrollment

3) Risk of bias assessment: traffic light plot

		Risk of bias domains							
		D1	D2	D3	D4	D5	D6	D7	Overall
Study	Ji F 2016								
	Liu A 2018								
	Luo XZ 2018								
	Li 2023								
	Shen 2018								
	Zheng 2020								
Domains:									Judgement
D1: Bias due to confounding.									Low
D2: Bias due to selection of participants.									Serious
D3: Bias in classification of interventions.									Moderate
D4: Bias due to deviations from intended interventions.									
D5: Bias due to missing data.									
D6: Bias in measurement of outcomes.									
D7: Bias in selection of the reported result.									

Risk of bias assessment for non-randomized studies - traffic light plot

		Risk of bias domains					
		D1	D2	D3	D4	D5	Overall
Study	Li B 2015						
	Liang Y 2016						
	Guo YF 2017						
	Ma W 2019						
	Dang PY 2020						
	Yu DS 2020						
	Xie 2021						

Domains:
D1: Bias due to randomisation.
D2: Bias due to deviations from intended intervention.
D3: Bias due to missing data.
D4: Bias due to outcome measurement.
D5: Bias due to selection of reported result.

Judgement
 Low
 Some concerns

Risk of bias assessment for randomized studies - traffic light plot

4) Secondary endpoints: Funnel plots of publication bias

